

Martin van Eker

Ensuring equality of access



Summary

- Context: the need
- What we did
- Did it work?
- Future and challenges

Clinical Academies

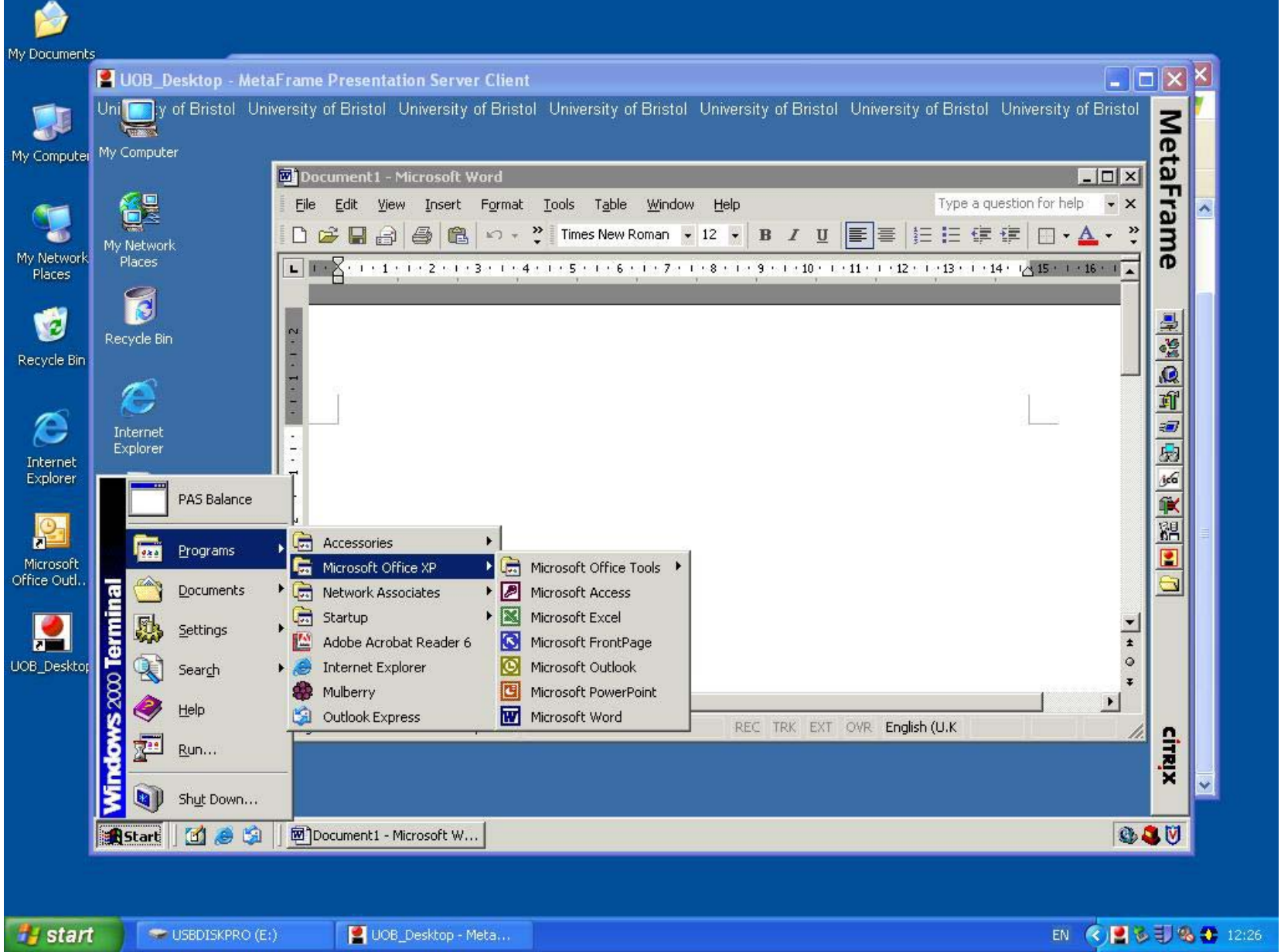
- 50% increase in student numbers
- New Peninsula Medical School
- NHS-based Academies (7 spanning 11 sites + AWP)
- Not just clinical experience
 - Students spend six months in a single academy receiving all their teaching, clinical skills, assessment, pastoral care, quality management
- Reconfigure the Medical School: new kind of partnership in the design and delivery of Medical Education

Role of eLearning and IT

- Single curriculum, many sites
- Each unit has the potential to be taught up to 28 times each year:
 - Students sit same final examination
 - Equality of access to learning materials and resources
- Principle driver: to help provide a consistent student learning experience across the clinical academies
 - Student desk-top

Guiding Principles

- Equality of access to information and resources (university desk-top)
 - Meet licence requirements (eg e-journals, software)
- Satisfy network security of both universities and NHS
- Sustainable and manageable support
- Flexibility to incorporate future requirements (eg video streaming, video conferencing)
- Single PC on desks with access to both university and NHS resources
- Academy PCs to accommodate any user irrespective of institution or organisation



Citrix



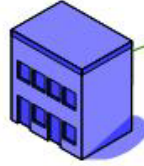
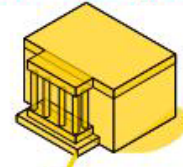
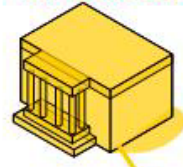
How did we provide access?

- Some of the logistical challenges were...
 - Sites spread over a wide geographical area
 - 7 Trusts with many different people to work with
 - Initial workshop
 - Access to Universities – initially University of Bristol and University of the West of England
 - Wider Academy vision for all NHS and HE learners
 - Who will support this model?

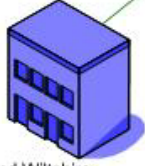
University of Bristol

University of the West of England

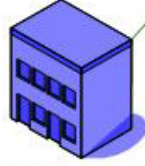
South West of England Regional Network



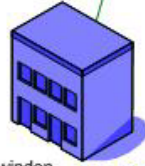
Gloucester



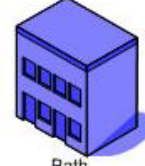
Avon and Wiltshire Partnership (Mental Health)



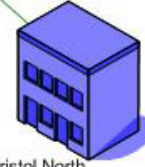
Cheltenham



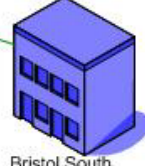
Swindon



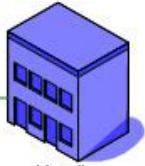
Bath



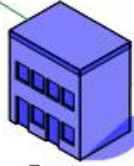
Bristol North



Bristol South



Yeovil



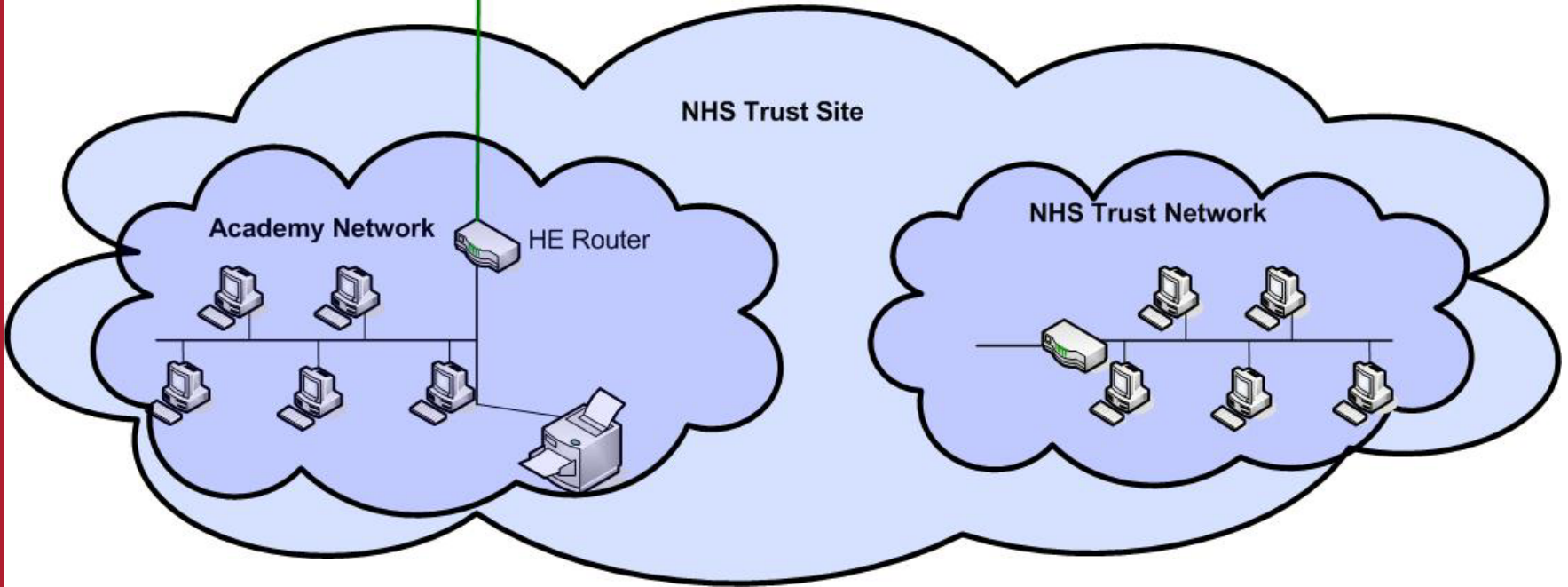
Taunton

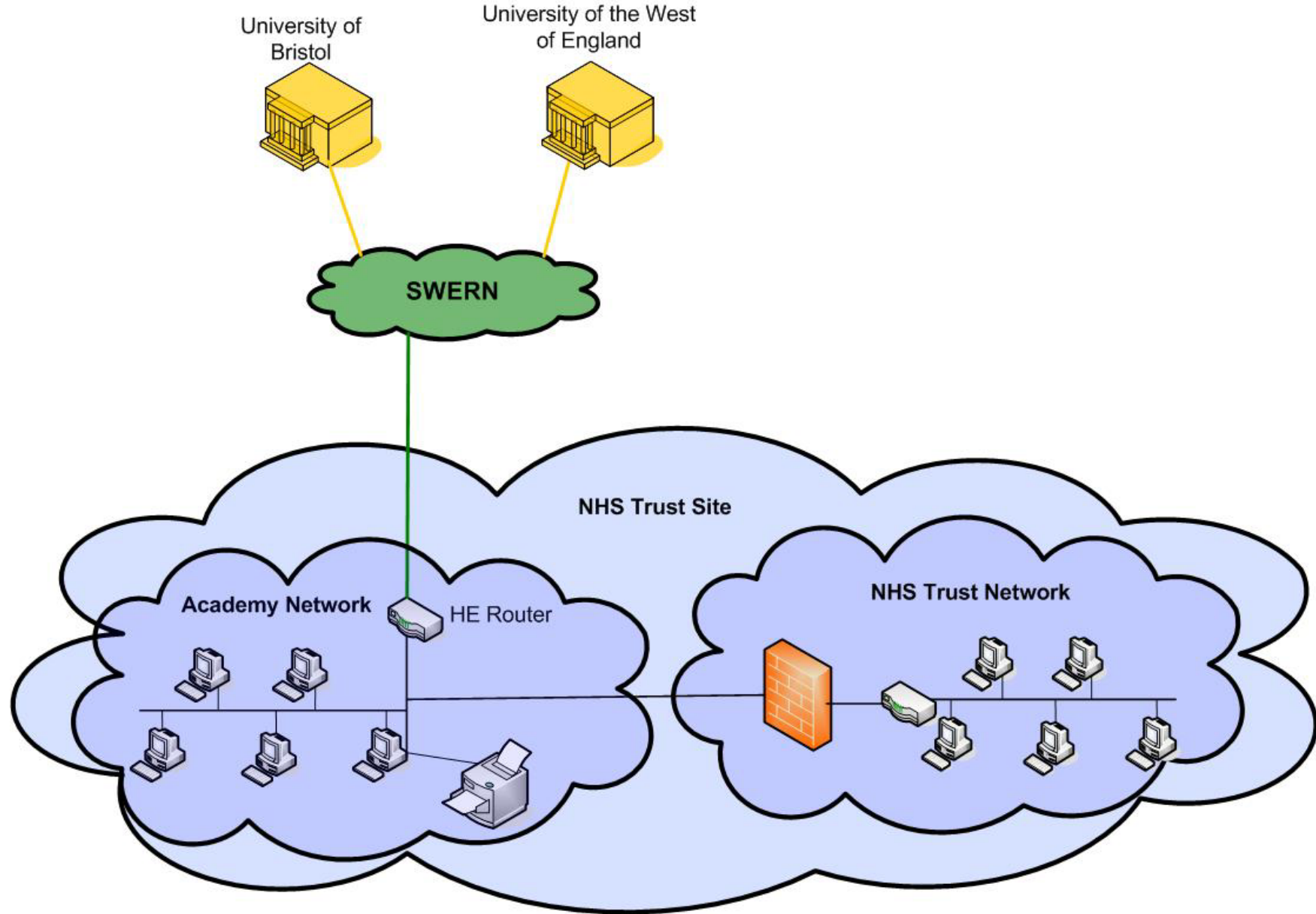
NHS Trusts Teaching
Hospitals 2Mb/s – 10 Mb/s
Dedicated links

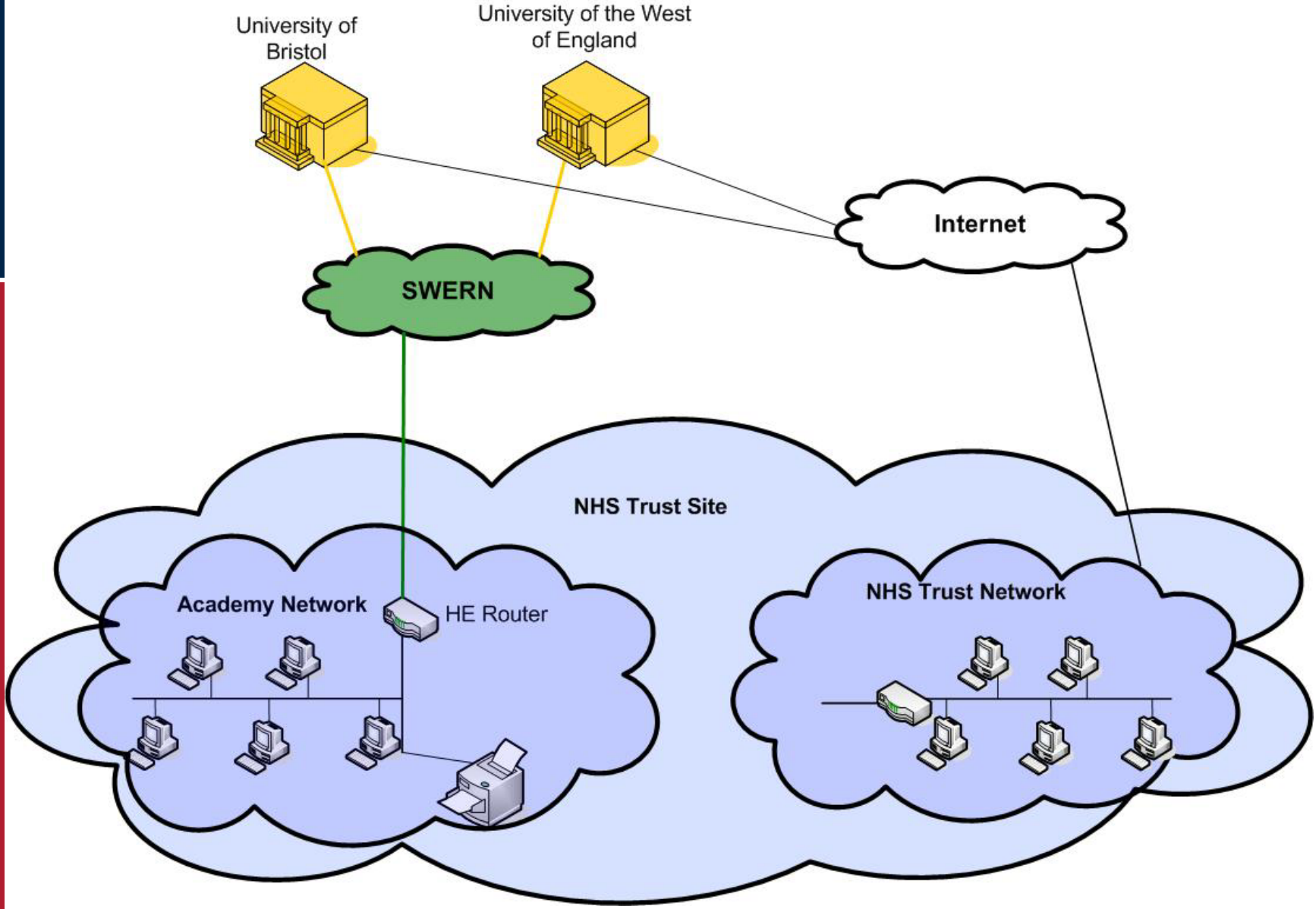
Academy Network



University of Bristol University of the West of England







Variations

Problems

- Printing needs firewall permissions to come back into the NHS site
- Cost. There is a high cost of the private circuits
 - Other alternatives
- Ongoing support for the Academy PCs as funding is swallowed up by the trust
- Video over Citrix is difficult.

Meet needs?

- IT access no longer a problem
- Student survey
 - Minor issues
- Have we achieved our guiding principles??
 - Yes but ever changing environments and needs

Key points

- Flexibility of local plans
 - Bath
 - North Bristol
 - AWP
 - Student Accommodation
- Communication and partnerships
 - NHS IT staff are not ours to tell what to do!
 - Our issues are not their priority
- Ongoing support
 - Divergence